



Spring 2009

P R E S I D E N T ' S M E S S A G E

COMING EVENTS

- Kiwanis Spring Fair
Everett Arena May 16
- Annual meeting May 17
Havenwood Great Room
3:00 Potluck Meal
- Great Nor'easter
July 23-26
Pelham, NH
- Raffle Fund Raiser
All summer
Sell Tickets!!

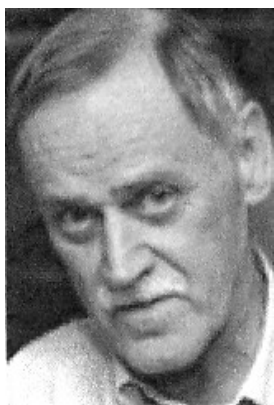
At last! Winter is history and spring is here! With it comes a revived burst of energy toward the numerous events and activities the Concord Coach Society has scheduled for 2009. Fueled by the interest shown toward New Hampshire's own Abbot-Downing Company of Concord, the Society's goal of preserving this chapter of our history is continually growing. People have come forward voicing sincere re-

spect and appreciation for all our efforts. The look of awe and curiosity on faces when people see a Concord Coach just says it all! Questions often asked are out of genuine interest and concern for this part of our history. To those of us already involved with preservation and education, it makes our efforts all worthwhile. Knowing future generations will get to appreciate the magnificent vehicles and the roles they



played in our history is extremely rewarding! As President, I'd like to express my sincere thanks to members for all their time and energy! Also, inviting new members to come along.....enjoy the ride!

P E T E R A . A D A M S 1 9 4 3 - 2 0 0 9



Peter A. Adams
1943-2009

Members of the Concord Coach Society were shocked and saddened to hear of the passing of our long time friend Peter Adams. For the past few years, Peter had been residing at his retirement home in Phoenix, Arizona. As the former curator at the Upham-Walker House on Park Street in Concord, many of us remember Peter for his quick wit, generous nature, consciousness to details, and his smile. He had a deep interest in the Abbot-Downing history (never spell "Abbot"

with two "t"s) and was always eager to learn more and convey his findings to anyone interested in Concord Coaches. Frequently he hosted our monthly meetings complete with refreshments. Christmas parties were gatherings (often with Victorian style and Chamber music) that were enjoyed by all. If there were any behind-the-scenes activities going on- Peter was there! Since retiring to Arizona, Peter kept in touch with many members, always willing to be involved even from a

distance.

He created and maintained an internet web site about the Concord Coach that became the most often visited site on this subject. He was continually updating and adding to the site with information provided by people from all over the world. It contained many photographs unseen before.

He will be long remembered and greatly missed!

ANNUAL MEETING

The past year has been very successful both financially and in fulfilling our educational mission

The annual meeting will be held May 17th at Havenwood in Concord. The agenda will include the annual reports from the treasurer and secretary as well as elections.

Also, there will be discus-

sions of this summer's events and outings for coach XIV. Your input is important, so please make an effort to join us. As has been the custom, we will meet at 3:00 and after the business meeting and an educational topic, we will enjoy a pot luck meal.

The past year has been very successful both financially and fulfilling our educational mission. With everybody's help, we hope to continue this progress.

Save the date and plan to attend.

A SPRING GREETING FROM COACH XIV



Spring Greetings Concord Coach XIV along with my fellow vehicles, coaches and sleighs at the Barn/Museum have made it through another winter. We listened to the snow fall off the huge roof, the icy rain come down and we felt a few little mice running through our resting wheels, but all are safe

and sound. As spring and summer approach, I am looking forward to the fitting of my new cover and the cleaning of the barn by the dedicated members of the Concord Coach Society and finally, seeing the sky through the open barn doors. Thank you again for your continued support.

A SAFE IS DONATED TO THE SOCIETY

Dr. Gregg Hillery, DMD of Concord has donated a large fire resistant safe to the Society. The safe will be used to store some of the Society's more valuable and important records and artifacts in the Museum Barn at the Hopkinton Fair grounds.

Brian Erickson, Pat

Maimone, and Peter James carefully removed the 3,000 pound safe from Dr. Hillery's office and loaded it onto Brian's flatbed trailer for the trip to the Museum. They had to wait two weeks for the snow to melt so that they could get to the barn and on Wednesday, April first, it was unloaded.



The safe delivered to the barn

The next part of this project will involve going through the Society's records and collections to determine how best to utilize this more secure storage.

Our thanks again to Dr. Hillery for this timely gift.

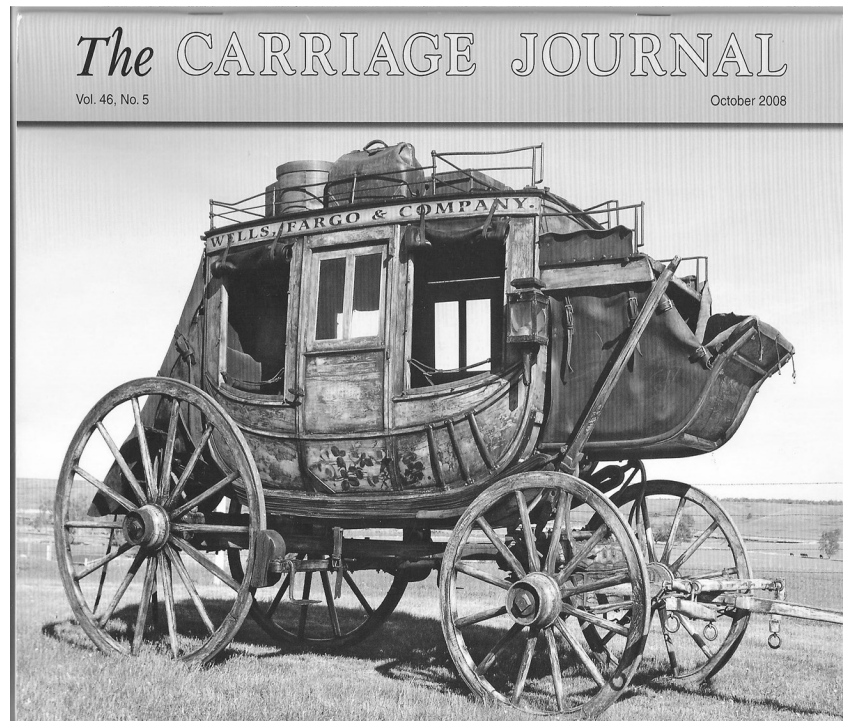
A REVIEW OF KEN WHEELING'S ARTICLE
IN "THE CARRIAGE JOURNAL"
ON COACH #670

PAGE 3

"The Reclamation of Concord Coach No. 670" by Ken Wheeling. *The Carriage Journal* October 2008. Published five times a year by the Carriage Association of America. Contact the publisher for copies of back issues. 3915 Jay Trump Road, Lexington, KY 40511 info@caaonline.com

The Carriage Journal, the official publication of the Carriage Association of America, makes a point in each issue to detail a particular vehicle or collection of such that would be of interest to its members. The October 2008 issue, Vol 46, No 5, should be of strong interest to Concord Coach enthusiasts. Ken Wheeling, a dedicated Concord Coach Society member, has written a fabulous treatise titled "The Reclamation of Concord Coach No. 670". This coach had passed through many hands since it was built in 1860 by the Abbot Company. It was one of two ordered by J.H. Walker of Richmond, VA in May of that year and delivered 37 days later, "two days earlier than promised", writes Ken.

Although the second coach of that order seems lost to history, this one had been brought to Hansen Wheel and Wagon in Letcher, SD, for meticulous restoration and conservation by its current owner. Hansen was contracted to restore this coach even though two prior careful restoration attempts had been made in the past to the western-style vehicle. The straw painted body and running gear showed the wear common to them from past years. The paintings on each door were nearly lost from the darkening of the varnish. It required knowledgeable and careful work to join original condition part to the prior restoration, and then to the currently needed repairs to



create a coach that was sound in body and yet still retained its somewhat timeworn appearance. The numerous photographs that accompany the article, taken by Hansen and Wheeling, illustrate in detail much of the condition the coach was in, prior to and during restoration. The full-color cover photo, taken by Hansen Wheel and Wagon, shows the completed work in all its splendor, shortly before being sent to its new home.

Ken's enthusiasm for unraveling the history that is tied throughout this Concord Coach is very apparent. He has documented in detail the numbers on the iron brackets, middle seat, and bunters to assure all involved that this was, indeed, an authentic Concord Coach, correlating this all the way back to the original purchase records that are now in possession of the NH Historical Society. He has

been able to carry the provenance of this coach all the way back to the birth and he writes about such with the passion of any good family genealogist. For the coach, its latest owner, Wells Fargo Bank of Ft. Worth Texas, has put the reclaimed vehicle on display at the bank.

The Concord Coach Society is fortunate to have among its ranks a member such as Ken who has such a strong desire to chronicle so many of these important pieces of history. Without his willingness to share his never-ending research with a variety of organizations, much of what we know today would never have come to light. Thanks, Ken.

Robin Briscoe

THE GREAT NOR'EASTER

"The Great Nor'easter" (2009 SASS New England Regional) conducted by the Merrimack Valley Marauders at the Pelham Fish and Game Club of Pelham, NH on July 23-26, 2009. It will be a "wicked good" time. "

Quoted from the web site of "The Great Nor'easter"

thegreatnoreaster.com

Planning continues for our participation in the Great Nor'Easter put on by the Single Action Shooting Society (SASS). This event

draws participants from all over the country and spectators from far and wide. It will be an excellent opportunity to showcase the Concord Coach

the gift shop. We will have the coach on display and have members present to talk with the public about the Concord Coach and its importance in opening up the western part of our country.

Volunteers, this is a chance to wear your western or period costumes.

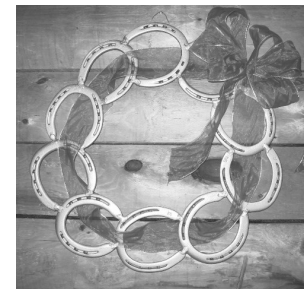


Society and its activities and mission, and to raise some much needed funds by selling items from

RAFFLE FUND RAISER



The Society is holding a raffle fund raiser this summer. The drawing for the prizes will be the last day of the Hopkinton Fair. The prizes donated to date include a running horse quilt and two horseshoe wreaths. Other prizes will be added during the summer. Tickets are available from members at \$1 each or 6 tickets for \$5.



MEMBER PROFILE RP HALE



RP HALE
INTERDISCIPLINARY ARTIST AND MUSICIAN

RP Hale is an interdisciplinary artist and musician from a Mexican family that is noted for its long involvement in the arts. He is a sixth-generation master calligrapher and illustrator, fifth-generation musician and third-generation wood engraver, printer and g i l d e r . We give our special thanks to RP Hale for the beautiful logo created especially for the Concord Coach Society .

RP grew up in Tucson, AZ. He graduated from University of Arizona with a degree in organic chemistry. With a talent in the arts, he developed his own beautiful style of calligraphy and illustration. He is also a concert harpsichordist and church organist. His interest in 19th century carriages and coaches came from his work with restoring and reproducing old carriages for the Southwest Wagon and Wheelworks in Patago-

nia, AZ in the 70's and early 80's. He used his chemistry knowledge to create the old paint look and his artistic ability to do the pin striping and detail work. He traveled east several times on music tours and met his present wife, Alice Pickett, in New Hampshire. He decided the East also had more potential growth for his music and arts interests. We are lucky to have him working with us.



The "Francestown" which ran between Francestown and Greenfield, New Hampshire. It has always been in Francestown and is presently owned by the Francestown Historical and Improvement Society.

2009 Annual Dues and Membership Form

Name _____

Street _____

City _____, State _____, ZIP _____

Email _____

Phone (_____) _____ - _____

Areas of Interest _____

Individual \$15

Business \$50

Non-Profit organization \$25

Patron \$50

Life \$250

Please mail to: The Concord Coach Society, PO Box 4077, Concord, NH 03302-4077

VISIT US ON THE WEB
WWW.CONCORDCOACH.ORG



Concord Coach #113

This nine passenger hotel coach was finished in 1866. It was built to the specifications of the Sayward-Durgin Stage Company of Center Harbor, New Hampshire.

Restoration of the undercarriage and body was done by Elam Reihl of Gap, Pennsylvania and the decorative gold leaf, pin striping and scenic paintings were done by Aaron Stolfus Jr of nearby Newmanstown.

The Concord Coach Society
PO Box 4077
Concord, NH 03302-4077